

LOOKBOX LIVING

The ultimate blueprint for a well-designed life

THE LUXE ISSUE

LIVING WELL

Stunning homes that spell new luxury



LITTLE

INDULGENCES

Covetable objects
for small spaces

GET THE LOOK!

Design ideas from
stylish hotels and cafes
around the world





Project type: 2½-storey terrace house | Floor area: 3,300 sqft

FORM FOLLOWS FUNCTION

A principle associated with modernist design is that form follows function. This was envisioned, concept-wise, for this terrace house that's home to a large multi-generational family. Using elegant tones and clean-cut details, Design of Schatz created practical, purposeful solutions that are also easy on the eyes.

TEXT LOUISA CLARE LIM



More in store

Upon stepping into the home, a tastefully designed space with defining details sets the tone of the terrace house. In the living area, a feature wall reveals storage shelves, when panels are slid over the TV console portion – providing plenty of space to store audio-visual equipment and other essential objects the family members may have. The cabinetry is finished with white laminate, accented and contrasted with black laminate, while the central TV console section is jazzed up with a grey marble-look laminate. Overhead, designer Jason Er designed a false ceiling with cove lighting to cleverly conceal the structural beams, which are rather low. A large L-shaped sofa anchors the open living area, perfect for accommodating the large family.



Entertain in style

A highlight of the modern home is its open-concept dining area, and separate dry and wet kitchens, which are visible upon stepping into the house. Grounding the space is the island counter, composed of a quartz worktop and stainless steel base. It features a pull-out table that accommodates around 12 – perfect for the couple who loves entertaining. When the sliding doors of the wet kitchen are left open, the sense of spatial depth is emphasised, with the use of rectilinear forms and sleek surfaces to create the built-in cabinetry and structures. A contrasting palette of light and dark tones in matt finishes, accented by a shiny mirrored panel and metallic tones, creates a classy ambience.





Little details

The junior master bedroom is comfortable and well appointed, with its own bathroom, a wide desk and TV feature wall. A laminate with medium wood tones and dramatic wood grains was chosen to dress up the TV feature wall, to make it stand out against the other white wall surfaces of the room. Its design also features a groove profile – a small detail that noticeably enhances its designer appeal.



Nature-inspired luxe

In the en-suite bathroom, Carrara marble-look tiles for the walls and grey stone-look tiles for the floors evoke a natural feel, for a subtly luxurious, soothing atmosphere. A rain shower further elevates the experience in this private sanctuary, allowing for relaxation after a long day at work.



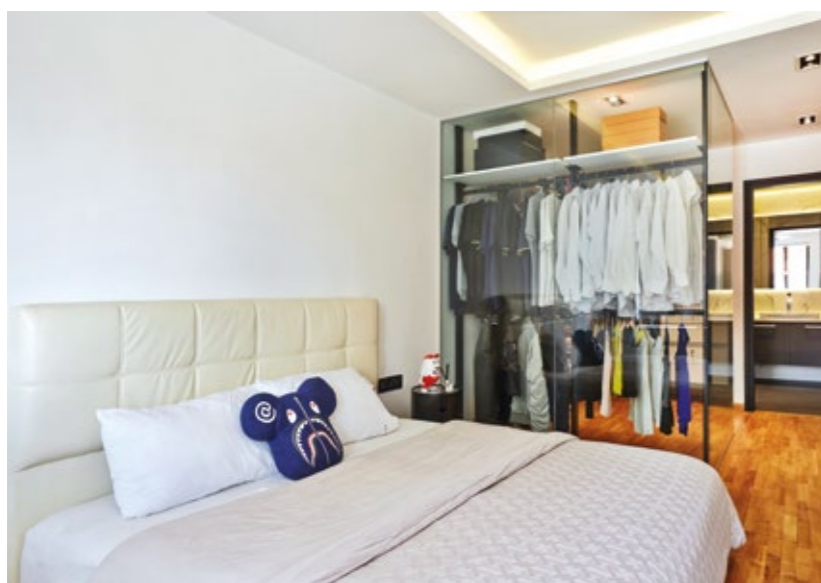
Line play

In keeping with the linear details seen throughout the house, the staircase divider and support is designed using metal channels with a rectangle profile. With a slatted design, calculated gaps in between the vertical bars allow the staircase – usually a constricted space – to feel open and airy. As for the stair treads, they make use of raw plywood, for added warmth and a unique look.



Light and airy

Apart from a large L-shaped desk, the master bedroom also features a walk-in wardrobe. Glass panels were used as dividers for the space, to allow natural light into the enclosed area. A modular pole system, in favour of solid cabinetry, was also chosen to minimise visual bulk for a more minimalist look.



THE BRIEF

With a preference for simple, yet functional designs, the property agent homeowner wanted a modern and minimalist look for his family home. This would be something stylish, but versatile at the same time, in order to accommodate the large multi-generational family of a mother, her two sons, the elder son's wife and son, and pet dog.

Spanning two and a half floors, with four bedrooms and an attic, the house is spacious but its structure posed challenges – its beams are very low, and sewage pipes are visible. Json Er of Design of Schatz cleverly disguised the eyesores, integrating them as part of design features.

Neutral colours and materials resembling natural surfaces were selected, and coupled with streamlined shapes and slim proportions, infuse the interiors with modern elegance.

DESIGN OF
SCHATZ
INTERIOR DESIGN CONSULTANCY

Design of Schatz
69 Ubi Road 1 #08-24
Oxley Biz Hub
Singapore 408731
Tel (65) 6384 3343

info@doschatz.com
www.doschatz.com