

LOOKBOX LIVING

The ultimate blueprint for a well-designed life

THE INSPIRATION ISSUE

Fab colours, materials and global movements to embrace

AWARD-WINNING
HOMES

Singapore's top
residential spaces and
interiors designers
to know

ART OF MAKING
Behind the scenes
with local makers





Project type:
5-bedroom
landed home

Floor area:
4,000sqft

REVAMP AND REFRESH

As life happens, priorities and lifestyle needs evolve. In the context of the home, it often calls for renovations to meet these changes. Such was the experience of this family, who had lived in this terrace house for more than a decade. Enter the team from Design of Schatz, who revitalised the interiors and brought in standout features while enhancing functionality.

TEXT ROSSARA JAMIL



Home is a haven

When Design Director Json Er was roped in to work on this project, the idea was to create an environment that was both welcoming and relaxing. Here, the family's collection of tropical plants and bonsais line the walls. To add to the ambiance, a streamlined, full-height water feature was constructed so they could all get to soak in the soothing sounds of flowing water. This idyllic setting can be enjoyed while sitting on the patio that opens up into the living area.



Divide and conquer

When doing heavy cooking, the wet kitchen can be closed off from the rest of the house. Opening it up to combine the wet and dry kitchens, however, presents a sprawling island and a space that blends the indoor and outdoor areas. "We've planned out a lot more storage space than what the kitchen previously had. We've also changed the floor tiles in the wet kitchen so that they match those in the dry kitchen," Json explains. Also, now featuring a quartz top, the kitchen is not only stylish, but also more hardwearing.





Wall wonder

One of the things the family requested was an eye-catching feature wall in the living area. More than that, it had to be able to house the family's collection of figurines and showcase them in the best possible way. The design team conceptualised the slatted design using warm wood veneer, and incorporated a centrepiece made of beautiful marble. The lighting was carefully planned to enhance the showcase, and add depth and warmth to the feature.



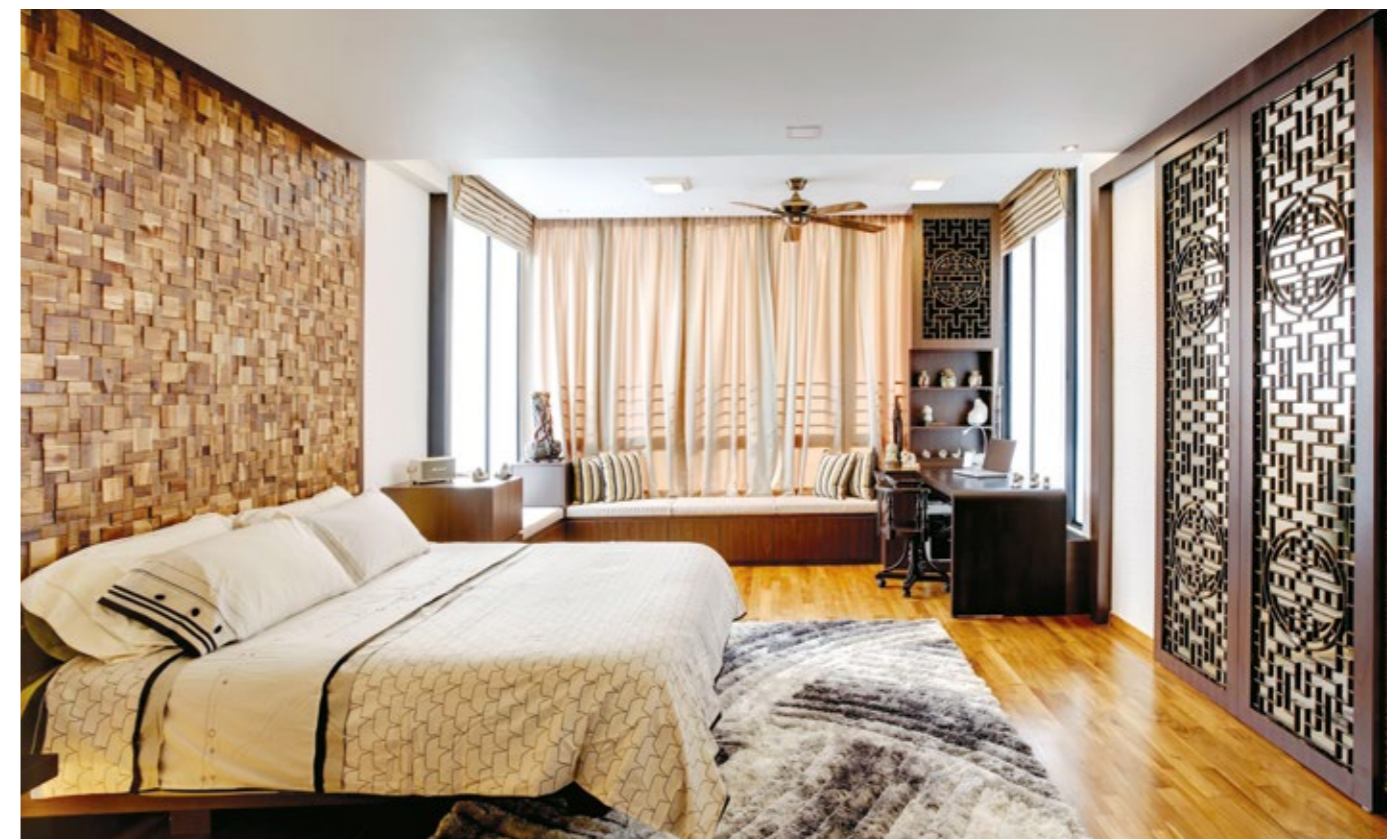
Touch of culture

(Facing page, top)
Much work has been done to the junior master bedroom, which comes with a balcony. The couple wanted a desk here. However, keeping to the original layout would have meant less room for movement. As such, Jason proposed to close up the balcony and merge it with the rest of the bedroom to gain an additional 100sqft of indoor space. Now that it's completed, the room looks much more spacious than before. And with its window seating, it also retains the casual, relaxed feel of a balcony.



Doorway to bliss

(Facing page, bottom)
Adding glamour to the space is the pair of traditional Chinese screens. However, they are more than merely decorative. Instead, they lead to the en-suite bathroom, which has a clearly designated bathing zone. Like the bedroom itself, it's decked out in wood features not only for consistency, but also to signal comfort and ease for performing one's daily ablutions.



THE BRIEF

A multi-generational family have called this terrace house home for more than a decade. As the years went by, they realised that some areas needed to be improved so as to enhance how they live and play together as a family. The house comes with three floors and a basement, as well as five bedrooms. The designers extended the front and back to maximise the available space. Some bedrooms were also enhanced to accommodate the family's changing needs.

Attention was also given to the landscaping. The backyard now bears an English country style garden. Design of Schatz was also keenly aware that the family would be staying in the home while renovations were going on. The challenge then was to minimise disruptions to the family's day-to-day living, which the team managed with care.

DESIGN OF
SCHATZ
INTERIOR DESIGN CONSULTANCY

Design of Schatz
69 Ubi Road 1 #08-24
Oxley Biz Hub
Singapore 408731
Tel (65) 6384 3343

info@doschatz.com
www.doschatz.com